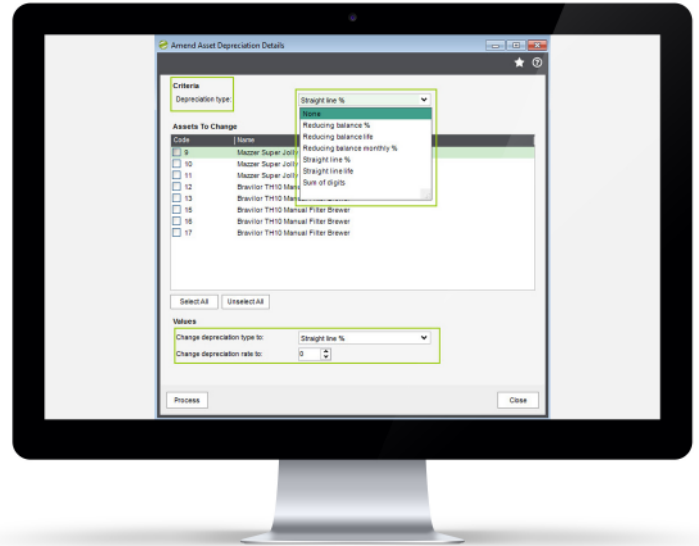




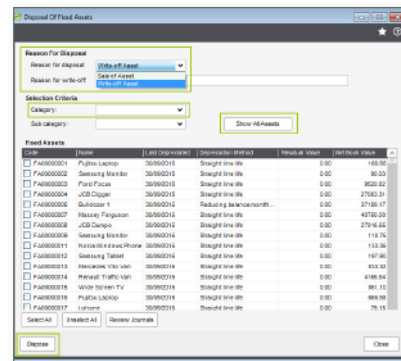
Fixed Assets

Manage your Fixed Assets with this fully integrated asset management solution for Sage 200. Linking directly to the financial ledgers and month end processes this is a simple module to use. Incorporating list views and workspaces plus a host of standard Sage 200 reports.

- Installed and maintained within Sage 200.
- Available within all Sage Companies at no extra cost.
- Unlimited assets available in each Sage company.
- Available for all Sage 200 users based on permissions at no extra cost.
- Import your Assets from Excel.
- Period driven depreciation postings linked to the Sage 200 period end routine.
- Create assets from the Sage 200 Purchase Ledger Invoice entry screen.
- Standard depreciation methods supported.
 - straight line, reducing balance, sum of digits.
- Calculate depreciation based on the number of days in the month.
- Mass change of depreciation type, percentage or life.
- Memo's and attachments per asset.
- Record maintenance and repair costs against existing assets.
- Integrates with Sage Project Accounting and Sicon Job Costing for depreciation postings.
- User defined Asset categories and sub categories.
- 150 analysis codes are available to configure across multiple custom tabs for each asset.
- Fixed Assets can be created into a structure to indicate how they are linked.
- Transaction history of depreciation, employees, location and nominal codes.
- Disposal and Revaluation process wizards included.
- Year-end process to handle current to brought forward adjustments with full nominal ledger integration.
- Reports are available in standard Sage report designer format and can be amended.
- Depreciation forecasts provided to help with budgeting future year's depreciation.



Multiple Asset Depreciation Amendment



Multiple Asset Disposal Process

Year End Report (Summary)				Date
Year Ending:				Time
Sub Category	Year to Date	Year to Date	Year to Date	
	Additions	Disposals	Depreciation	
computer equipment	13,350.00	0.00	154.28	
Office Equipment	185,438.00	0.00	6,214.00	
Category: Office Equipment	174,268.00	0.00	7,023.10	
Report Total:	310,248.00	0.00	13,782.26	
Financial Year Ending: 30/01/2016				
Category:	All			
Sub Category:	All			
Fixed Asset:	Office Equipment			
Details:	All			
HomeStyle Kitchens Ltd				Sage 200 (Fixed Assets)
(v2.0.0.1) Year End Report (Summary)				Page 1

Statutory Year End Reporting